



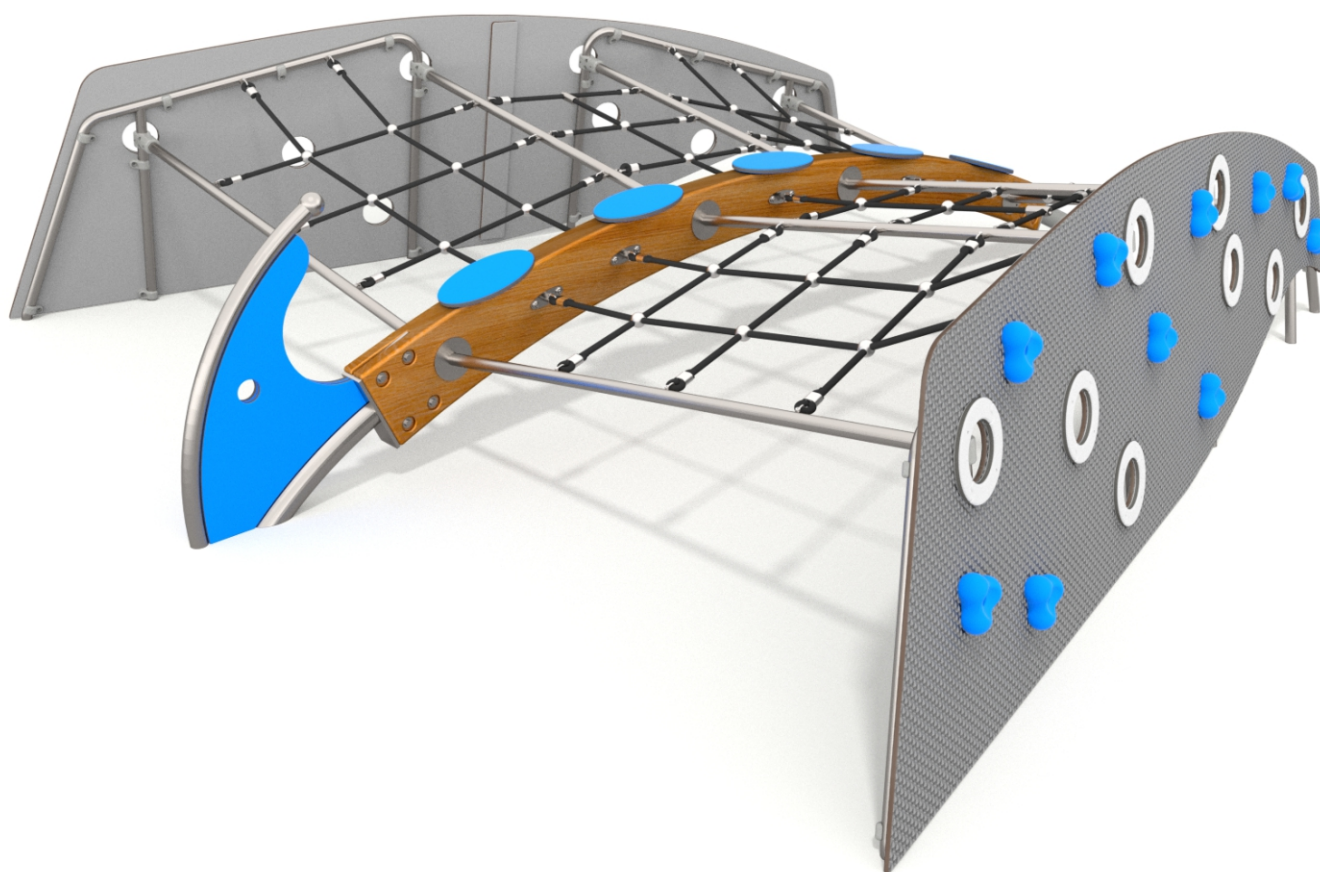
SOCIALIZING



CLIMBING



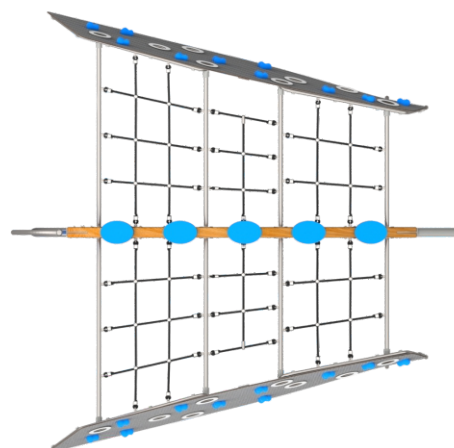
BALANCING



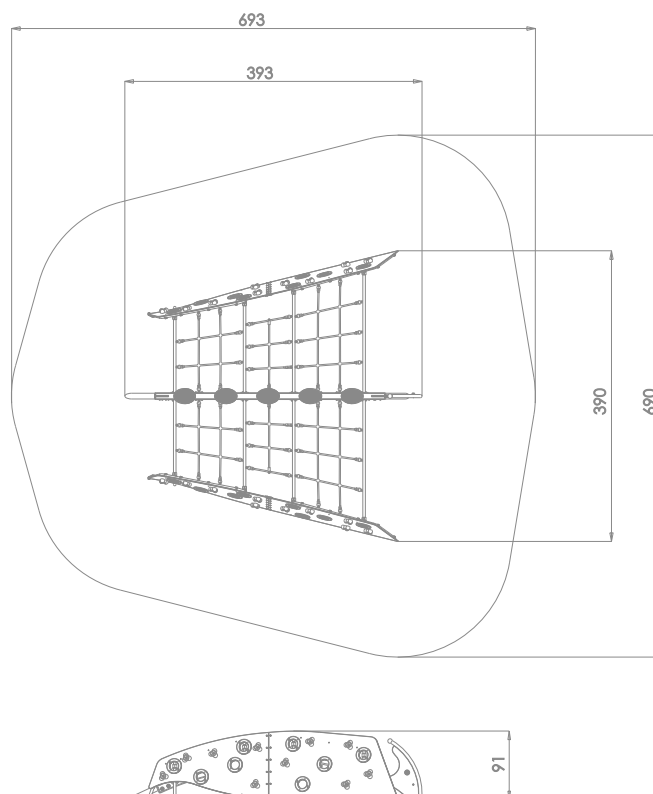
#### INFORMATION ABOUT THE PRODUCT

Dimensions	390 x 393 cm
Safety zone	690 x 693 cm
Safety zone area	38 m <sup>2</sup>
Overall height	91 cm
Free fall height	91 cm
Amount of users	14
Product complies with EN 1176-1:2017-12	YES
Availability of spare parts	YES
Age range	3-12

According to EN 1176-1:2017-12 norm, the product requires applying a safety surface according to the product's free fall height.



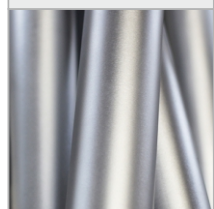
8507



SCALE 1:100

# MATERIALS:

SOLID CONSTRUCTION  
MADE OF STAINLESS STEEL  
AISI 304 TOTALLY RESISTANT  
TO WEATHER CONDITIONS.



BENDED POSTS MADE OF  
SOFT CONIFER WOOD  
9 CM THICK, 26 CM WIDE  
AND 280 CM LONG.



PLATES OF THE WALLS  
AND PLATFORMS MADE  
OF COLOURFUL 13 MM  
HPL (BLACK PLATES MADE  
OF 8 MM HPL).



PLATES OF THE WALLS  
MADE OF COLOURFUL  
TRIPLE LAYERED 15 MM  
HDPE POLYETHYLENE,  
IN THE HIGHEST QUALITY.



POLYPROPYLENE ROPES  
PP-MULTISPLIT TYPE  
WITH A STEEL CORE AND  
A DIAMETER OF 16 MM.



SOLID AND ESTHETIC ROPE  
CONNECTORS MADE OF  
INJECTION MOLDED  
POLYAMIDE.



CLIMBING ROCKS MADE  
OF CHIPPINGS AND  
COLOURFUL POLYESTER  
RESIN

