



**Buglo**

# KINGLO

MATERIAL SPECIFICATION







The castles are inspired by medieval fortresses but constructed from the latest materials and technologies, ensuring safety and durability. From majestic towers to hidden passages, every element is designed with long hours of fun in mind.

The **Kinglo Series** consists of 19 unique products available in two colour versions: SAND and ICE. Each version features distinctive details that add a magical charm and stimulate children's imagination.

## ICE



## SAND

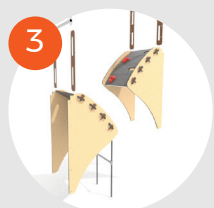




**1 Wobbly climbing wall** designed on a spring, HDPE 15 mm plates connected with strengthened rubber –for platforms 120/150 cm



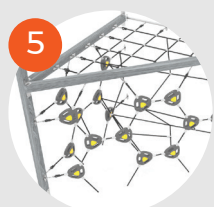
**2 Suspension Bridge** – stainless steel ladder connected with HDPE/HPL and ropes giving a fun entrance to the castle.



**3 Skip Bridge** – Broken in half you can climb different part of the unit. Platform difference: 60 cm.



**4 Cage attached** to steel post with a bird nest seat where you can rock yourself or have a great observation point.



**5 Nets** with the use of rotomoulding rope holders are more stable and easier to climb.

## NEW MODULES

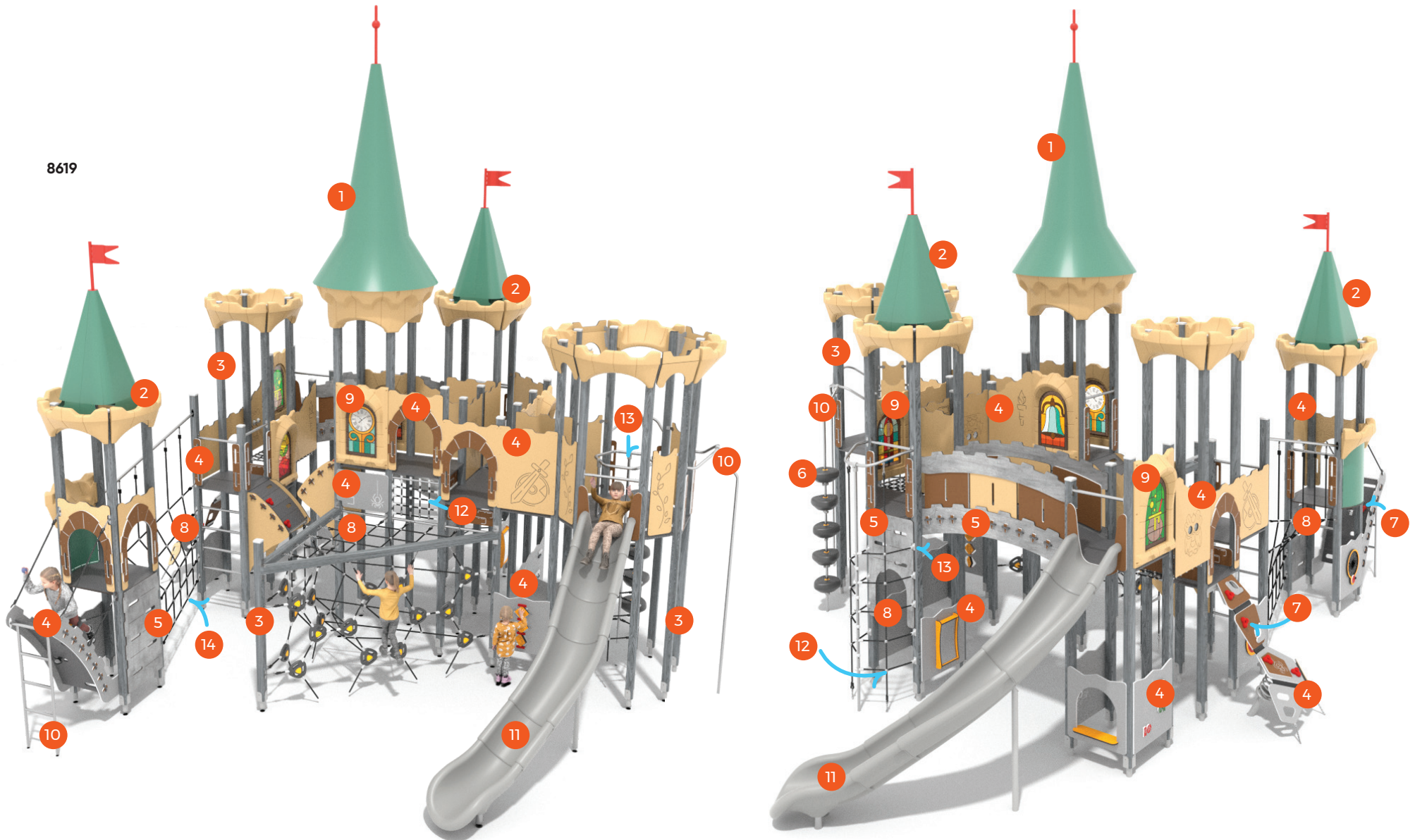
8619



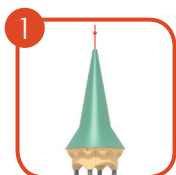
8613



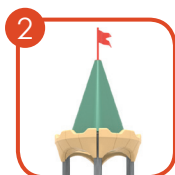
8619







1 Rotomoulded roof with a metal spire - 3,8 m height.



2 The roof is made of a combination of metal sheets and components constructed from rotomoulding.



3 Wood from coniferous trees (Scandinavian spruce), with a crosssection of 90x90 mm, heartwood-free, layered with polyurethane adhesives completely resistant to moisture. The wood undergoes a three-stage impregnation process. Painted grey.



4 Wall panels made of high quality, coloured triple-layer HDPE 15 mm, resistant to moisture and UV.



5 Wall panels made of coloured, highest quality HPL 13 mm (black HPL 8mm), completely resistant to moisture and UV.



6 Modules manufactured of rotomoulded polyethylene develop prowess and coordination.



7 Climbing rocks made of chippings and colourful polyester resin.



8 16 mm diameter polypropylene ropes ppmultislip, with a steel core.



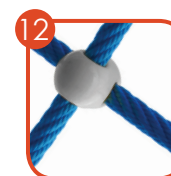
9 LDPE rotomoulding window shutters with directly printed polycarbonate sheets inside (6 mm).



10 Solid construction made of stainless steel AISI 304 totally resistant to weather conditions. Solid construction made of stainless steel AISI 304 totally resistant to weather conditions.



11 Open, modular, polyethylene slides made of rotomoulded LDPE type material.



12 Solid and esthetic rope connectors made of injection molded polyamide.



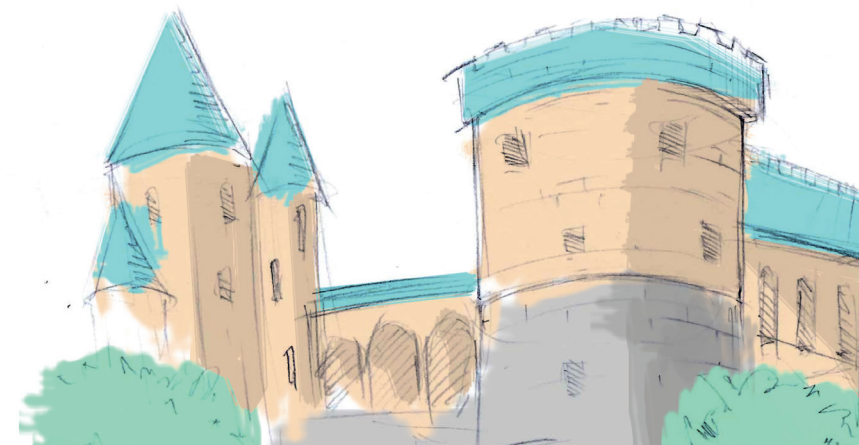
13 System of connectors and clamps made of strong aluminum alloy. Aluminum is secured by the process of electrophoresis and powder coating with polyester paint UV resistant and QUALICOAT attested.



14 Rope endings pressed in a sleeve made of durable aluminum alloy.



15 Handle made of rotomoulded LDPE type material.







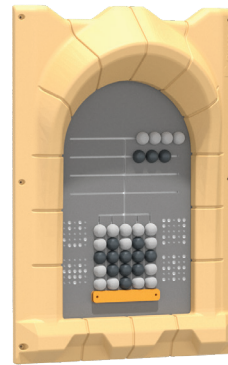
### Knights Battle

Spin the disc and battle the knights.



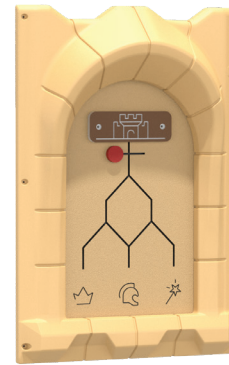
### Hourglass

Turn the knob and measure time with the hourglass.



### Coins

Choose your route with your friends and see whose coin is going to be faster.



### Fate

Drop the button and see your fate: Princess / Wizard / Knight



### Princess or Knight?

Turn the puzzle and create your figure: Princess Knight



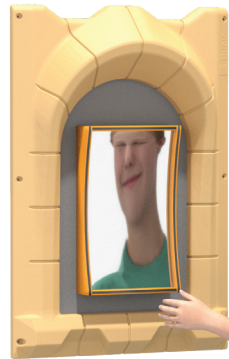
### Spy Bat and Owl

Wherever you go, the Bat and the Owl will always watch you.



### Convex and Sunken Mirrors

Look in the mirror and have a laugh.



### Scanimation

Turn the knob and create your illusion



### Coins

Choose your route with your friends and see whose coin is going to be faster.